



SLABS & CABS
OFFICIAL BULLETIN OF THE
GULF COAST GEM & MINERAL SOCIETY

P.O. Box 60781
Corpus Christi, TX 78466
Art Worley Editor
361-345-4425
2561 Raintree Trail
Ingleside, Texas 78362
artleew@agates123.com

Volume 49

Number 7— 8

Jul Aug 2011

Next Meetings

Board Meeting
6 Sept 2011
At the Shop
6:00 PM– 9:00 PM

General meeting
16 August 2011
At the Shop
3933 North Timon Blvd.
On North Beach (across from
Villa Del Sol)
Corpus Christi, Texas
6:30 PM

Membership Fees for 2012

Membership dues for 2012 are due in January 2012
We have 4 types of memberships and they are as follows:
Single \$ 15.00
Spousal \$ 20.00
Junior \$ 5.00
This is for any member from the age of 6-17 years Of age
Honorary, Does Not Pay Dues
If Dues are Not Paid by the time of the Show you will
Forfeit Your Membership
Sandra Hinkle , Membership Chairlady

Rainbow Cactus
Brewster County Texas

INSIDE

Notices Pg 1
5 July 2011 Pg 2
Shop Keys & Rules Pg 3
July Birthstone Pg 4-6
Coming Events Pg 5-6
Peridot Pg 7
Board Mtg Minutes GCGMS .. Pg 8
Board Mtg Minutes GCGMS ...Pg 9
Info Page Page 10



5 July Board Meeting Minutes of the Gulf Coast Gem & Mineral Society

An open house was held at the Lapidary shop on North Beach on June 21, 2011. Seven members attended, Sue & Jim Ryland, Lois & Bill Pattillo, Dick Cline, Jerrold Simpson and Mark Walbrink. The open house was held instead of the regular meeting at the Science Museum.

There were refreshments and door prizes. Lois Pattillo won a nice slab of Picture Jasper and Sue Ryland won a Crazy Lace Agate pendant mounted in silver. Dick Cline donated the jasper and Mark Walbrink donated the crazy lace.

We hope to have another open house in August. Neither Mark or I will be here for the third Tuesday in July.

Jerrold Simpson



Sue And Jim Ryland



Bill And Lois Pattillo



Lois Pattillo And Jerrold Simpson



Mark Wolbrink And Dick Kline

Mr. & Mrs. William (Buzz) & Dana Adair of Beeville, Tx are selling their rough and slab rocks. They also have some finished items that may be for sale. Mr. Adair has been in the rock collecting and cutting business for 50 years. He is no longer able to continue.

They live at Business 181 North, Beeville, TX. That is at the intersection of Business 181 North and Kessler in Beeville. You may contact them at 361-358-5723 to set an appointment.

They have rocks from all over the United States and several other countries. They have rough, sliced, tumbled, finished projects and equipment.

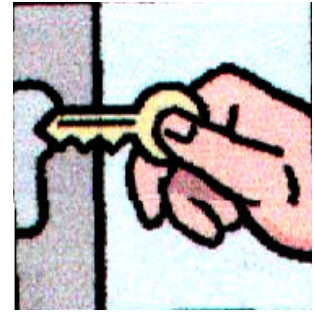
Please refer to this email when you call them for an appointment.

GCGMS Lapidary Shop Rules

1. The lapidary shop equipment may not be used by anyone who has not signed a liability waiver.
2. Shop equipment use flat fee is \$2.00 per hour. Sign in on arrival. Pay Supervisor and sign out before leaving the shop.
3. "Open shop" hours are to be used only by those who have taken the cabochon class or have shown proficiency on the equipment.
4. All children under the age of 17 must be accompanied by an adult trained on the use of the equipment.
5. Supervisor must inspect rock "set-up" prior to anyone starting slab saw.
6. Long hair should be tied back, loose sleeve should be secured, and safety procedures followed.
7. Safety glasses are recommended and are the responsibility of the individual. Some are furnished by the GCGMS, or you may bring your own.
8. The last person to use a piece of equipment before the shop closes is responsible for cleaning that piece of equipment and the work area. This may include tabletop, sponges, aprons, catch trays, etc.
9. Shop Supervisor is the final authority on shop rules and usage.

Revised May 2009

Any Articles, Minutes are other items not received by Thursday Morning 9:00 am After the Board Meeting. Will Not Be Published in That Months Newsletter.

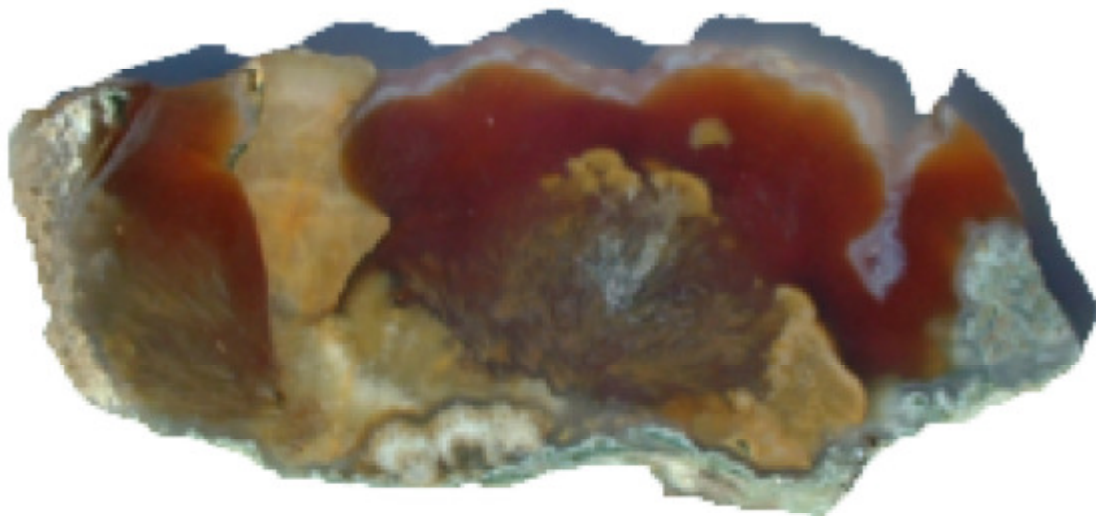


Those with keys to the Lapidary Shop are

Mark Wolbrink 361-991-2495 Shop Supervisor
 Jerrold Simpson—361-851-8788
 Cell - 361-877-3073
 Hank Swan—361-993-9861/361-857-2405

Please call one of these when you would like to use the shop. They will not all be available at the same time, and once in a while none of them will be available. Most of the time at least one of them should be able to work out a time and date the shop could be open for you. Remember the club has a lot of good equipment to use. Several different classes are being conducted on Monday evening from 6:00 PM to 9:00 PM. The shop is open during these times for use of the equipment even if you are not involved in a class. Shop is also open Saturday 9:00 Until Noon.

**Flower Garden Agate
 Woodward Ranch
 Brewster County
 Texas**



Traditional Birthstones - Ruby (July)

Ruby celebrates the birthday of those born in the Month of July. The ancient *lapidaries* (books that described the physical and metaphysical aspects of gems) spend considerable time with ruby. "Those be rubies, fairy favors:" a line from Shakespeare's *Midsummer Night's Dream* provided the theme for Lincoln (Nebraska) Gem and Mineral Club's 40th anniversary show in 1998. Shakespeare mentioned rubies several times in his various writings and you are referred to the classic reference by George Frederick Kunz for the remainder of these. So not only is ruby the stone to celebrate July's births but it is also the stone to celebrate the 40th anniversary of special occasions.

Fine rubies are probably one of the world's rarest gems. If you were to walk into any jewelry store, the jeweler could probably show you many fine diamonds but probably only a few fine rubies.

Rubies are a red to orange-red to purple-red variety of the mineral **corundum**, aluminum oxide (Al_2O_3). Ruby and its companion variety of corundum, **sapphire**, are very hard---9 on **Mohs** scale of 10. Only diamonds and a few manufactured abrasives such as boron carbide and silicon carbide are harder.

Ruby crystallizes in the **hexagonal** system---well-formed crystals often appear to be tiny barrels. There are three crystallographic axes of equal length that intersect one another at 120° and a fourth longer axis that is perpendicular to the other three. Ruby as all other varieties of corundum is very tough. It shows no cleavage but the crystals sometimes exhibit a basal parting. Rubies are fairly dense---the specific gravity ranges from 3.95 to 4.10 but most is almost exactly 4.00.

Because of its high specific gravity rubies that come from alluvial sources such as Sri Lanka and Burma are collected in a deep cone-like separator. Gravel and water are placed in the cone and the cone is rotated. Minerals with low specific gravity such as quartz, mica and calcite wash out of the cone as it is rotated. The miner will finish with an aggregate of higher specific gravity minerals near the vertex of the cone. If the miner is fortunate, a few of these stones might prove to be rubies. Red spinel may also be included in these heavy minerals but they are easily separated from ruby by both physical and optical properties.

Since ruby crystallizes in the hexagonal system it has two **refractive indexes**, the numerical measures of how much a beam of light is refracted (bent) and slowed down when it enters the crystal. These range from the **extraordinary ray** (the one that varies) of 1.762 on the low end to the **ordinary ray** (the one that remains fixed) of 1.770 on the high end. Since the stone has only one index of refraction that remains fixed (the optic axis), it is said to be **uniaxial**. Since the lower refractive index varies upward to meet the higher, the stone is said to be **negative**. Ruby is said to be uniaxial negative.

Rubies may be **dichroic**---that is, one wavelength of light is transmitted along a crystallographic axis while another wavelength may be absorbed along the same axis. A small instrument called a dichroscope is needed to detect dichroism. A dichroscope may be made with a pair of calcite prisms that are oriented to take advantage of the strong birefringence (numerical differences in refractive indexes) of this mineral. One of the calcite prisms will transmit a certain wavelength and the other will absorb it. Thus, the viewer sees two different colors in the two windows of the dichroscope. A simple dichroscope can be constructed by orienting two pieces of polaroid material perpendicular to one another. The Polaroid separates the two beams just like the calcite prisms do.

Color is the most important character of a ruby when it comes to a jeweler properly representing the stone. All rubies must be shades of red, orange-red, or purple red. There is no such thing as a pink ruby. By definition pink corundum is a sapphire. There are standard color sets such as those manufactured by Pantone™ that will guide the jeweler or hobbyist in determin-



Synthetic Rubies.



Synthetic Ruby, Flame Fusion Boule



Natural Ruby, Crystal in Calcite,
Afghanistan.



Natural Star Ruby Crystal,
Sri Lanka.

Coming Events

August 2011

12-14 PASS CHRISTIAN, MS: Harrison County GMS Annual Show; West Harrison Community Center, 4470 Espy Avenue; Fri 12-6, Sat 9-6, Sun 10-4; adults \$3, under 12 free w/adult; geo rock ID, prize raffle; contact Tomsey Westermeyer, 9270 Serenity Drive, Pass Christian, MS 39571, (228) 586-5279; email: tomsey@cableone.net; Website: www.gulfportgems.org

19-20 TAHLEQUAH, OK: Tahlequah Rock & Mineral Society Show; Tahlequah Community Bldg, 300 W 1st Street; Fri & Sat 9-5; FREE; rocks, minerals, fossils, gems, jewelry, demonstrations, auction, children's activities, educational displays; contact Sara Brasel, (918) 458-0801; email: crosstimbersrd@earthlink.net

20-21 BOSSIER CITY, LA: Ark-La-Tex Gem & Mineral Society Annual Show; Bossier Civic Center, 620 Benton Road; Sat 10-6, Sun 10-5; adults \$4, students \$1, under 6 free; door prizes, youth activities, demonstrations, exhibits; contact Charles Johns, 9314 Overlook Drive, Shreveport, LA 71118, (318) 687-4929; email: cwsejohns@bellsouth.net; Website: www.larockclub.com

20-21 LIVE OAK, TX: The Bead Market Wholesale & Retail; Live Oak Civic Center; 8101 Pat Booker Road; Sat 10-5, Sun 10-4; glass, gemstones, pearls, lampwork, PMC, vintage beads & buttons, jewelry, books, tools, silver, findings; contact Rebekah Wills, (903) 240-7198; email: rebekah@thebeadmarket.net; Website: www.thebeadmarket.net

27-28 MOUNTAIN HOME, AR: Ozark Earth Science GMFC Show; Sr Center, Cooper Park, 1101 Spring Street; Sat 10-6, Sun 10-5; FREE, door prizes, gem, mineral, fossils, displays, child's area, handmade jewelry, demos; contact Ed Hakesley, 821-1 Alexis Circle, Mt Home, AR 72653, (870) 424-0956; email: edscamp3@yahoo.com; Website: www.ozarkearthscience.org

27-28 JASPER, TX: Pine Country G&M Society 17th Annual Show; Sat 9-5, Sun 10-5; The Event Center, 6258 Hwy 1-90W, 5 miles west of Jasper; adults \$2, students & children free; rocks, gems, jewelry, minerals, door prizes, grand prize, spinning wheel, silent auction, lapidary demonstrations; contact Lonnie Stalsby, 258 CR 066, Jasper, TX 75951, (409) 382-5314

September 2011

3-4 ARLINGTON, TX: Arlington Gem & Mineral Club Annual Show; Arlington Convention Center, 1200 Ballpark Way; Sat 10-6, Sun 10-5; adults \$6, seniors & children \$3, Scouts in uniform free; silent auctions, Gem ID, Kids. Korner, door prizes, gem, lapidary and jewelry displays and demonstrations, Rock Food Table; contact Jack Spinks, 209 Overlook Drive, Midlothian, TX 76065, (214) 335-9452; email: jlspink@sbcglobal.net; Website: www.agemclub.org

10-11 SILOAM SPRINGS, AR: NW Arkansas G & M S Fall swap; clubhouse parking area, Hwy 43N; Sat 9-5, Sun 10-5; FREE; gem wash, auction Sat; cont: David Leininger, (479) 263-1424; email: hulagrub@aol.com; Website: www.nwarockhounds.org

16-18 ENID, OK: Enid Gem & Mineral Society Annual Show & Sale; Oak Wood Mall, 4125 W Owen K Garriot Road (Hwy 412W); Fri & Sat 10-9, Sun 12-6; FREE; rocks, gems, minerals, jewelry, beads, fossils, rock food table, junior activities, grab bags, demonstration, door prizes; contact Billy Wood, (580) 234-5344 or (580) 402-5568; email: baronladislaus@att.net

23-25 SANTA FE, NM: Palace of the Governors Annual Show, New Mexico History Museum; Palace of the Governors courtyard, 113 Lincoln Ave; Fri 9-7, Sat & Sun 9-4:30; FREE; dealers, specimens, talks, demonstrations, contact Inessa Williams, 113 Lincoln Avenue, Santa Fe, NM 87501, (505) 476-5106; email: inessa.williams@state.nm.us; Website: www.nmhistorymuseum.org

24-25 RICHARDSON, TX: Bead Market Wholesale & Retail Show; Richardson Civic Center, 411 W Arapaho; Sat 10-5, Sun 10-4; FREE; gemstones, glass beads, lampwork, vintage beads & buttons, Swarovski Elements, crystals, pearls, bone beads, jewelry, books, tools; contact Rebekah Wills, (903) 240-7198; email: rebekah@thebeadmarket.net; Website: www.thebeadmarket.net

October 2011

1-2 JACKSONVILLE, AR: Central Arkansas GMGS 39th Annual Show; Jacksonville Civic Center, 5 Municipal Drive; Sat & Sun 9-5; FREE; more than 20 dealers, demonstrations, exhibits, door prizes, Kids. Dig, geode cracking, Rock Spin, mineral identification, grand prize; contact Lenora Murray, 218 Old Hwy 11S, Hazen, AR 72064, (870) 255-3679; email: lenoramur@aol.com; Website: centralarrockhound.org

8-9 FT WORTH, TX: LMRA Stone Steppers Annual Show; Lockheed Martin Recreation Association, 3400 Bryant Irvin Road; Sat & Sun 9-6; FREE; rocks, gems, minerals, flinters, prospecting equipment, GPAA, jewelry, pottery, stained glass, children's activities; contact Steve Shearin, 860 Stafford Station Drive, Saginaw, TX 76131, (817) 733-5368; e-mail: steve.l.shearin@lmco.com

8-9 TEMPLE, TX: Tri-City G&M Society Annual Show; Mayborn Convention Center, 3303 N 3rd Street; Sat 9-6, Sun 10-5; adults \$3; silent auctions, raffles, door prizes, grand prize, demonstrations, dealers, rough, slabs, cabs, faceted gems, equipment, finished jewelry; contact Chip Burnette, 2630 Polk Street, Killeen, TX 76543, (254) 630-3573; email: burnette@aceweb.com

13-15 MT IDA, AR: 25th Annual World Champion Quartz Crystal Digging Contest; Mt Ida Area CofC; Montgomery County Fairgrounds, Fairgrounds Road; Thu thru Sat 9-3; adults \$80 (\$95 after Oct 1); dig quartz crystals, keep all you find, meet other miners, maybe win a prize; contact Maureen Walther, Mt Ida Area Chamber of Commerce, Mt Ida, AR 71957, (870) 867-2723; email: director@mountidachamber.com; Website: www.mountidachamber.com

Continued on Page 6

14-16 MT IDA, AR: .Quartz, Quiltz & Craftz Festival.; Mt Ida Area CofC; Montgomery County Fairgrounds, Fairgrounds Road; Thur thru Sat 9-6, Sun 10-4; FREE; dealers, minerals, jewelry, quartz crystals, quilts, crafts, kid.s digging contest Sat; cont; Maureen Walther, Mt Ida Area C of C, Mount Ida, AR 71957, (807) 867-2723; email:director@mountidachamber.com; Website: www.mountidachamber.com

21-23 AUSTIN, TX: .Gold. Annual Show AGMS; Palmer Events Center, 900 Barton Springs Road; Fri 9-5, Sat 10-6, Sun 10-5; adults \$5, Srs (60/over) \$4, students (13-18) \$1, children (6-12) 50 cents; 30 + dealers, jewelry, beads, gemstones, mineral specimens, crystals, fossils, spheres, lapidary equip, exhibits, Rock Food. table, touch table, fluorescent minerals, member collections, silent auction, demonstrations, faceting, fossil cleaning, polymer clay, .Youth Education Day. Friday, Gem Mine, Wheel of Fortune, Jewelry Making, door & grand prize; contact Susan Postlethwait, 6719 Burnet Lane, Austin, TX 78757, (512) 458-9546; email: showchariman@austingemandmineral.org; Web site: www.gemcapers.com

November 2011

11-13 PASCAGOULA, MS: Mississippi Gulf Coast Gem & Mineral Society Annual Show, Magnolia State Gem, Mineral & Jewelry Show; Jackson County Fairgrounds, 2902 Short Cut Road; Fri 10-6, Sat 9-6, Sun 10-5; adults \$3, children 12 & under free; door prizes, raffle, 20 dealers, gold panning and sluicing; contact James Darnell, 7121 Oakhurst Drive, Ocean Springs, MS 39564, (228) 875-2310

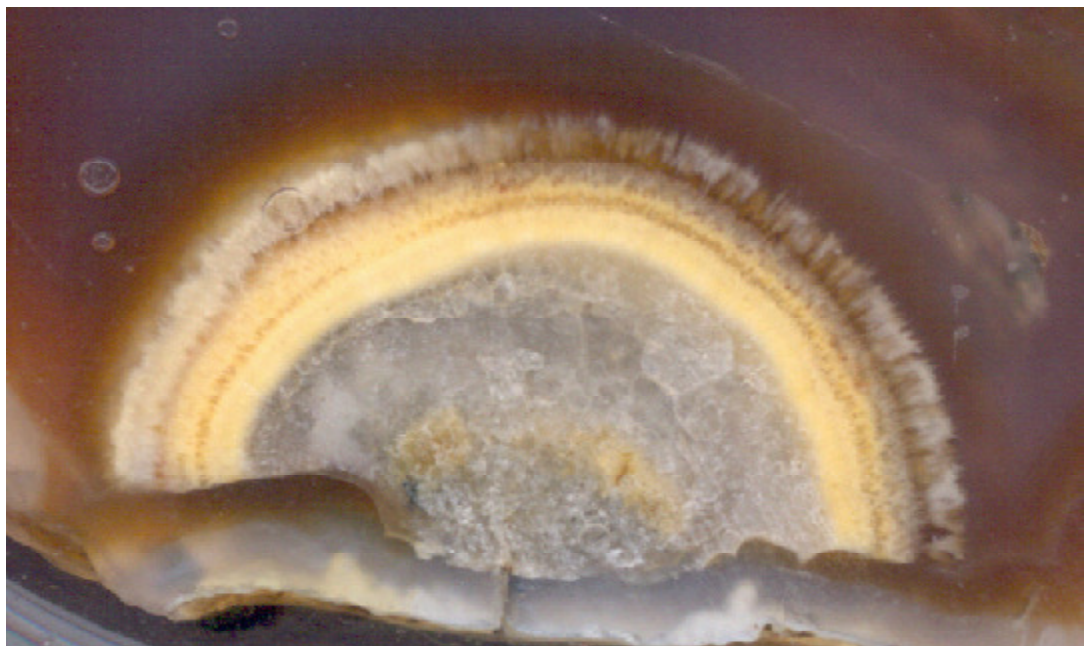
ing where rubies leave off and where sapphires begin so far as color is concerned. I utilize such a set in my gem stone classes at UN-L. It quickly clears up any distinctions for the students.

There are not many stones that can be confused with a ruby (spinel has a much lower RI and tourmaline is strongly doubly refractive) and the biggest problem the jeweler or hobbyist usually faces with these stones is separating the natural from the synthetic stone. In earlier times all of the synthetic rubies were made by the flame fusion process where powdered aluminum was passed through a very hot gas flame. The Aluminum melted and combined with Oxygen to produce synthetic corundum. These stones all had curved growth lines, gas bubbles and flecks of aluminum powder in them. They were easy to spot. Such is not the case now. There are some synthetic (now called created) rubies that are grown in bombs or crucibles of various kinds that are much more difficult to detect. Diffusion treatment may impart a red to colorless or pale corundum.

Kashan™ rubies are a flame grown form---as I write this I am looking at an example with veils, step-like and rhomboid crystal inclusions. Douros™ synthetic rubies are produced in Greece and have been marketed only since about 1995. I recently obtained a piece of Chakravorty™ ruby with only the word of the dealer telling me that it contains about 15% natural ruby.

The pages of the last decade of *Gems and Gemology* and its 15 year Index (1996) show many kinds of synthetic rubies, as well as other gems, have come onto the market. Gemological Institute of America now offers a course on detecting natural, synthetic and treated gems. Where curved growth lines and bubbles once sufficed to separate a natural from a synthetic ruby, new technologies have now forced the jeweler and the hobbyist to learn a whole new set of skills to determine the nature of the stone.

**Pom Pom Agate
Sierra Aguja
South Brewster County
Texas**



Peridot is the official birthstone for the month of August as adopted by the American National Association of Jewelers in 1912. It is also the stone for the Zodiac sign of Libra. See the birthstone tables for additional references to this stone. Peridot may be given as a gem on the 16th wedding anniversary.

For as long as I can remember I have pronounced this gem as "pear-a-doe" and until recently believed this was correct. Someone took the time to write informing me that the correct pronunciation is actually per'i-dot so I have amended this page to hopefully educate others as well. However, it seems that pear-a-doe may have come into common usage as I found two dictionaries that offer both pronunciations.

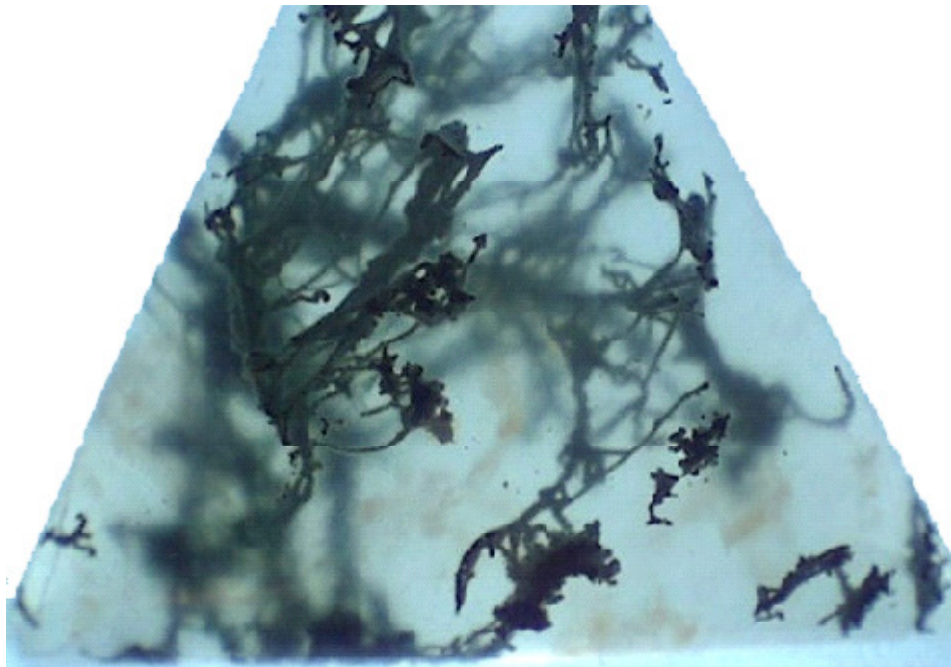
Peridot is the gem variety of olivine and ranges between 6.5 and 7 on the Mohs scale of hardness.

Gem quality peridot comes from Arizona, Burma, Norway, islands in the Red Sea, Hawaii and is sometimes found in meteorites. It's been mined as a gemstone for thousands of years, and is mentioned in the Bible under the name of Chrysolite. Legend says that peridot was one of the favorite gemstones of Cleopatra and that some of the "emeralds" worn by her were actually peridot.

Folklore, Legend, and Healing Properties:

It is thought to bring the wearer good luck, peace, and success,. Its powers include health, protection, and sleep. The advantages of peridot are to attract love and calm anger while also soothing nerves and dispelling negative emotions.

Green Moss Agate
Sierra Aguja
South Brewster County
Texas



GCGMS Board Meeting 7/5/11

The Board Meeting was called to order at 6:37pm by Vice-President Kyle Hinkle.

Board members in attendance were Kyle Hinkle, Linda Simpson, Jerrold Simpson, Mark Wolbrink, Gene Schade and Suzy Nick.

Kyle Hinkle gave the membership report as 81 regular Members, 21 Junior Members and 11 Honoree Members.

The June board meeting minutes were published in the Cabs and Slabs.

Jerrold Simpson made a motion to approve the minutes and Suzy Nick seconded it. The motion was approved.

Gene Schade presented the Treasurer's Report. Most of the expenses for the month were for the Kid's Rock Camp. Jerrold Simpson made a motion to accept the report as presented and Suzy Nick seconded it. The motion was approved.

Mark Wolbrink gave the shop report by saying activity at the shop is very slow and no one is coming in on Saturday. He will close the shop on Saturday mornings for the summer. He made a recommendation to increase the shop fees from \$2.00 to \$3.00 per hour for members. A discussion followed.

Mark Wolbrink made a motion to increase the shop fees and Gene Schade seconded it. The vote was 2 yeses, 3 nos and 1 abstained. We will revisit this again in the fall.

We need to replace a vice for the Highland Park Saw and it will cost \$400. Jerrold Simpson made a motion to replace the vice and Suzy Nick seconded it. The motion was approved.

The Field Trip Report was given by Kyle Hinkle on the Kid's Rock Camp trip to Harbor Island. They found teeth, barbs, mouth plates and vertebrae.

Jerrold Simpson gave the Show Report by saying he had nothing to report. He will be getting the contracts out and the table fees will remain the same.

The Education Report was given by Kyle Hinkle on the Kid's Rock Camp. There were 16 children on the first day and 18 for the rest of the camp.

We will have all the children there for the September Meeting to report to the members on the camp and to show what they accomplished. Six hours is one hour too long for the camp so next year it will be decreased by one hour. Polishing rocks was the most popular activity. He misjudged the ability of the children and most of the activities were too easy for them.

They do need to learn to clean up after they complete a task. Kyle took lots of pictures and will be making a video that can be presented to the Federation and also be used at our show to promote the Camp for next year.

Old Business was a recap of the show and sending 1/2 of the silent auction money to the Federation. Linda Simpson will provide a written budget for the Federation at the next board meeting.

There is still no answer from anyone in the Federation on their operating budget, how the money is being used and if other clubs are donating proceeds from their show to the Federation.

The Main Library will be cutting their hours starting in August so we need to find a new meeting place.

There was no new business.

Jerrold Simpson made a motion to adjourn the meeting and Mark Wolbrink seconded it.

The meeting was adjourned at 8:11pm.

Respectively Submitted by
Suzy Nick
Secretary



**Scottish Agate
Usan Angus
Scotland
UK**

GCGMS Board Meeting 8/2/11

The Board Meeting was called to order at 6:39pm by President Kevin Schleicher. Board members in attendance were Kyle Hinkle, Jerrold Simpson, Mark Wolbrink, Gene Schade, Art Worley, Kevin Schleicher and Suzy Nick.

Respectively Submitted By
Suzy Nick
Secretary

Kyle Hinkle gave the membership report as 83 regular Members, 21 Junior Members and 11 Honoree Members.

The July board meeting minutes were not published in the Cabs and Slabs. They will be published in this month's newsletter.

Gene Schade presented the Treasurer's Report. Jerrold Simpson suggested we move money from the checking account to the money market account or to a CD.

Also, most checking accounts are now paying interest. Gene will check into these options and also said we might want to give two scholarships rather than one at our 50th Anniversary Show. Kyle Hinkle made a motion to accept the report as presented and Jerrold Simpson seconded it. The motion was approved.

Mark Wolbrink gave the shop report by saying he is giving a class on cabs to two members.

Shop activity is still very slow with no one showing up.

The vice for the Highland Park saw is not ready yet and when he called, Mark was told they were just now making the mold.

The Field Trip Report was given by Kevin Schleicher. He will be putting a trip together when it gets cooler.

The Show Report was given by Jerrold Simpson. The show will be on March 3rd and 4th, with the set up on the 2nd. He presented a copy of the cover letter and will be sending out the contracts by this week end along with a revised electrical contract and a copy of the fees for the RV hook ups.

The Education Report was given by Kyle Hinkle. He will have a meeting with the children from the Summer Rock Camp to go over their presentation at our September Meeting.

The Federation Report was given by Jerrold Simpson. The Austin Club will be hosting the Annual Federation Meeting in 2015. They would like to borrow our display cases. Jerrold will follow up to see how they plan on transporting the cases.

Old Business was where the Board Meeting will be held going forward. It was decided to hold the meeting at our Rock Shop.

New Business was given by Kevin Schleicher. Officer elections are coming up and most of the board members are going to need to be replaced.

Jerrold Simpson has been cleaning up the shop and there is an ancient PC and old sound system that he would like to donate to the city to recycle.

Kyle Hinkle made a motion to adjourn the meeting and Mark Wolbrink seconded it.

The meeting was adjourned at 7:35pm.

**Scottish Agate
Path of Condi
Perthshire
Scotland
UK**



GULF COAST GEM & MINERAL SOCIETY, INC.
P.O. Box 60781 Corpus Christi, TX 78466

MEMBER of

**American Federation of
Mineralogical Societies**



**South Central
Federation of
Mineral Societies, Inc**



Meeting

Held the third Tuesday of each month at 6:30 pm at the museum of Science & History 1900 North Chaparral September through May, and at the Lapidary Shop 3933 Timon Blvd., Corpus Christi TX for June through August.

Membership Fees

Individual \$15.00 Couples \$20.00 Junior (under 17) \$5.00

2011 Officers

**President: Kevin Schleicher
Vice President: Kyle Hinkle
Past President: Suzy Nick**

**Secretary: Suzy Nick
Treasurer: Gene Schade
gene@casadeoro.net**

**Board
Appointees**

**Membership: Sandra Hinkle
Education: Owen Hopkins
Librarian: Linda Simpson
Treasurer Gene Schade
Show Chair: Jerrold Simpson**

**Show Publicity: Donna Grimes
Shop coordinator: Mark Wolbrink
Field Trip Coordinator: John Anderson
Dealer Chair: Jerrold Simpson**

**Standing
Committies**

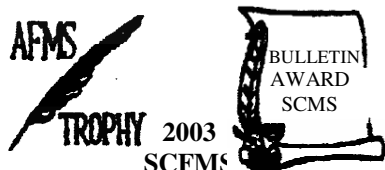
**Shop coordinator: Mark Wolbrink
Federation Liaison: Linda Simpson
Historiorn: Frances Marten
Librarian Linda Simpson
Communications: Suzy Nick**

**Bulletin Editor; Art Worley
Webmaster: Art Worley
E-mail artleew@agates123.com
Door Prizes; Gilbert Rodriguez
Refreshment Hostess; Letty Rodriguez**

Slabs & Cabs

Art Worley
2561 Raintree Trail
Ingleside, TX 78362

Slabs & Cabs Awards



2003 SCFMS Small Bulletins 4th place

PUBLICATION
2nd 2002 2001 1st
 2001-4th place AFMS
 2000 9th place SCFMS
 1999-8th place SCFMS
 1999- 9th place (new editor) AFMS

Permission is granted to use any article in this publication, provided proper credit is given.